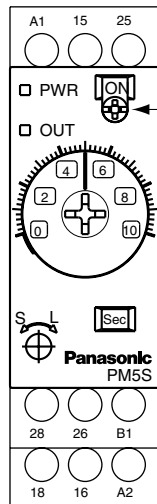


PM5S-A-24-240V	Pulse ON delay, Flicker, ON-flicker; Signal OFF-delay, Pulse One-shot, One-Cycle	16 selectable ranges 1s to 500h	Relay timed-out	5 A / 250 V AC	Flush mount / DIN rail - adapter-	Terminal block, cap, panel cover, rubber gasket, mounting frame	24 to 240 V AC/DC	100
PM5S-M-24-240V	Pulse ON delay, Flicker, ON-flicker; Signal OFF-delay, Pulse One-shot, One-Cycle	16 selectable ranges 1s to 500h	Relay timed-out	5 A / 250 V AC	Flush mount / DIN rail - adapter-	Terminal block, cap, panel cover, rubber gasket, mounting frame	24 to 240 V AC/DC	100
PM5S-S-24-240V	Power ON-delay	16 selectable ranges 1s to 500h	Relay timed-out	5 A / 250 V AC	Flush mount / DIN rail - adapter-	Terminal block, cap, panel cover, rubber gasket, mounting frame	24 to 240 V AC/DC	100

Mode selection
PM5S-A/M type

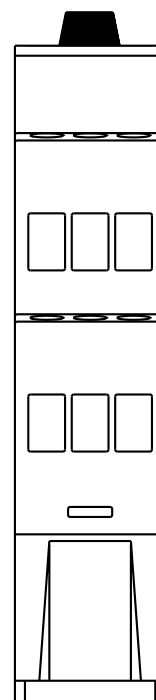
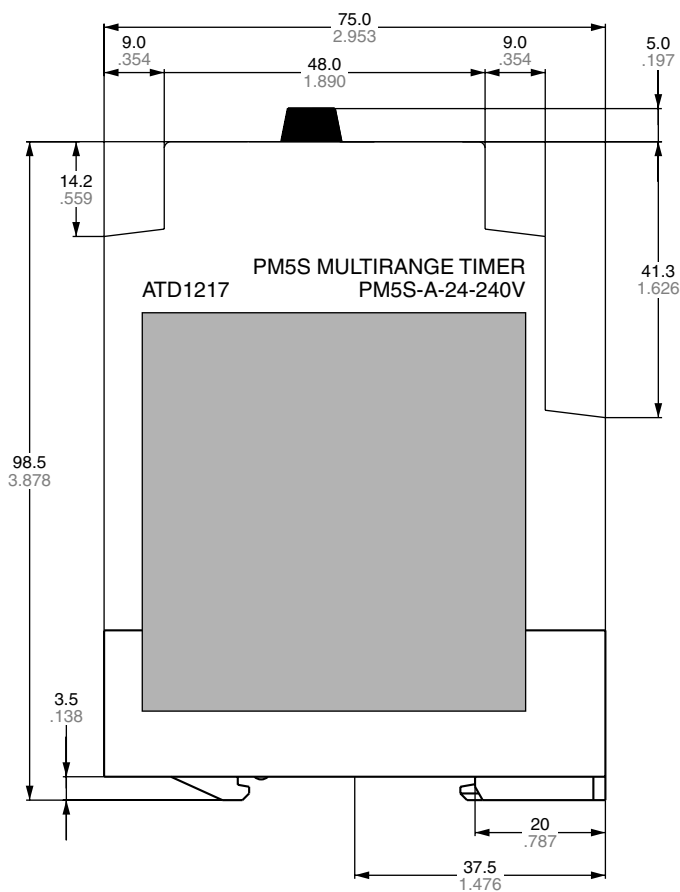
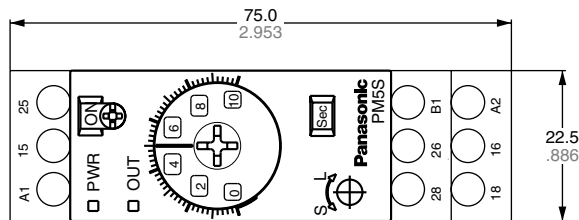


Operation mode indicator
Selectable from 8 operation modes
ON: ON-delay
FL: Flicker
FO: ON-flicker
SF: Signal OFF-delay
OS: Pulse One-shot
OC: Pulse One-cycle

The 6 operation modes of PM5S-A and PM5S-M can be selected by the operation mode selector switch. In the next pages the different modes will be explained.

Dimensions
PM5S-□

mm inch



PM5S-A/S/M

Specifications

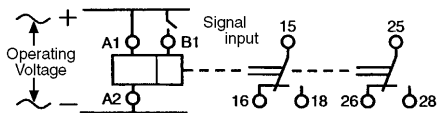
Item	Type	PM5S-A	PM5S-S	PM5S-M
Rating	Rated operating voltage	24 to 240V AC/DC		
	Rated frequency	50/60Hz common		
	Rated power consumption	2.6 VA (AC), 1.4 W (DC)		
	Rated control capacity	5A 250V AC (resistive load)		
	Operating mode	Pulse ON-delay Pulse Flicker Pulse ON-Flicker Signal OFF-delay Pulse One-shot Pulse One-cycle	Power ON-delay	Pulse ON-delay Pulse Flicker Pulse ON-flicker Signal OFF-delay Pulse One-shot Pulse One-cycle (with instantaneous contact)
Time accuracy (Note:)	Time range	1s to 500h (Max.) 16 time ranges switchable		
	Operating time fluctuation	±0.3% (power off time change at the range of 0.1s to 1h)		
	Setting error	±10% (Full-scale value)		
	Voltage error	±0.5% (at the operating voltage changes between 85 to 110%)		
	Temperature error	±2% (at 20°C ambient temp. at the range of -10 to +55°C +14 to +131°F)		
Contact	Contact arrangement	Timed-out 2 Form C		Timed-out 1 Form C Instantaneous 1 Form C
	Contact resistance (Initial value)	Max. 100mΩ (at 1A 6V DC)		
	Contact material	Silver alloy		Au flash on Silver alloy
Life	Mechanical (contact)	2×10 ⁷		1×10 ⁷
	Electrical (contact)	10 ⁵ (at rated control capacity)		
Electrical function	Allowable operating voltage range	85 to 110% of rated operating voltage (at 20°C coil temp.)		
	Insulation resistance (Initial value)	Min. 100MΩ	Between live and dead metal parts Between input and output Between contacts of different poles Between contacts of same pole	(At 500V DC)
	Breakdown voltage (Initial value)	2,000Vrms for 1 min Between live and dead metal parts 2,000Vrms for 1 min Between input and output 2,000Vrms for 1 min Between contacts of different poles 1,000Vrms for 1 min Between contacts of same pole		
	Min. power off time	100ms		
	Max. temperature rise	55°C 131°F		65°C 149°F
Mechanical function	Shock resistance	Functional	Min. 98m/s ² (4 times on 3 axes)	
		Destructive	Min. 980m/s ² (5 times on 3 axes)	
	Vibration resistance	Functional	10 to 55Hz: 1 cycle/min Single amplitude of 0.35mm (10min on 3 axes)	
		Destructive	10 to 55Hz: 1 cycle/min Single amplitude of 0.75mm (1h on 3 axes)	
Operating condition	Ambient temperature	-10 to +55°C +14 to +131°F		
	Ambient humidity	Max. 85%RH (non-condensing)		
	Atmospheric pressure	860 to 1,060hPa		
	Ripple factor (DC)	20%		
Others	Protective construction	IP40		
	Weight	120g 4.233 oz		

Note: 1) Unless otherwise specified, the measurement conditions at the maximum scale time standard are specified to be the rated operating voltage (within 5% ripple factor for DC), 20°C 68°F ambient temperature, and 1s power off time.
2) For the 1s range, the tolerance for each specification becomes ±10ms.

Terminal layouts and Wiring diagrams

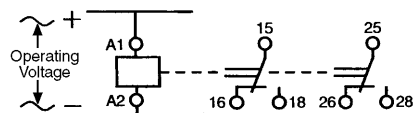
PM5S-A

- Timed-out 2 Form C



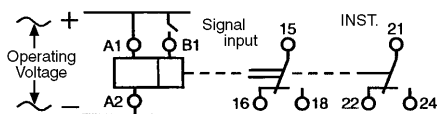
PM5S-S

- Timed-out 2 Form C



PM5S-M

- Timed-out 1 Form C
- Instantaneous 1 Form C



Contact

